



SI 163VSD ROLL-FAST DOOR

INTERNAL DOOR WITH A RELIABLE APPLICATION



SI 163VSD ROLL-FAST DOOR

INTERNAL DOOR WITH A RELIABLE APPLICATION



Maximum Door Size

4500 mm High x 4000 mm Wide

The SI 163VSD Roll-Fast Door is manufactured in Australia and is suitable for all internal applications.

With an opening speed of up to 1500mm per second the SI 163VSD Roll-Fast Door is capable of operating quietly and will allow traffic to enter and exit the opening virtually without stopping.

The SI 163VSD Roll-Fast Doors are also supplied with an emergency opening device should the power supply fail.

A modern designed motor / gearbox complete with a VSD unit provides a soft start and soft stop on closing. This means even under continuous operation virtually no wear, and as a result, minimum maintenance, service and spare parts. Should they be required, are readily available.

Power required 240 volts single phase with earth and neutral.

Door specifications

SI 163VSD Technical drawing

APPLICATION:

Internal.

DOOR SIZE:

The SI 163VSD Roll-Fast Doors are produced for internal openings up to 4500mm High x 4000mm Wide, and are capable of being installed in areas with an air-pressure differential of no more than 15 Pascals.

DOOR PANEL:

All doors are fitted with a durable vinyl panel with a clear PVC, centre section 1000mm high x the full width of the door opening enabling vision through the door.

EMERGENCY ACCESS:

Via hand chain.

DOOR SPEED:

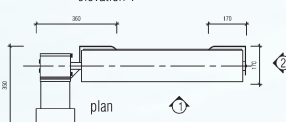
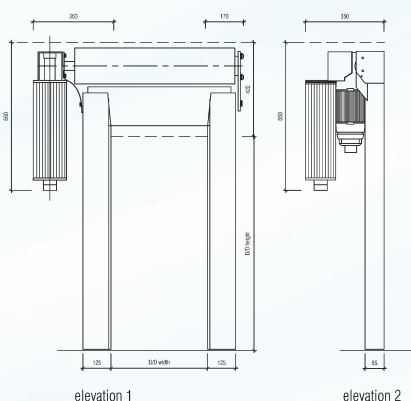
The standard operational speed of the SI 163VSD Roll-Fast Door is: 1200mm-1500mm/Sec. (with Speed Variator mounted to motor / gearbox).

SAFETY FEATURES:

A Photo Electric Cell is installed within the door posts to prevent the door closing, should the Photo Electric Cell be obstructed.

ACTIVE REVERSING EDGE:

Within the bottom rail a self-guarding safety edge system is fitted. This system, when triggered, will return the door to the open position and "lock" the door in the open position until reset.



CONTROL PANEL:

A Digital Display panel is supplied with all SI 163VSD Roll-Fast Doors.

POWER SUPPLY:

SI 163VSD Series: A 10 ampere, single phase, neutral and earth power supply complete with isolating switch.

DOOR FINISH:

Standard galvanised or optional powder coated to door posts.

Standard Features

Reverse Edge Photo Electric Cell

Control Options

- Inductive Loops
- Microwave Sensors
- Push Buttons
- Infrared Sensors
- Remote Control
- Interlock Facility



Panel Colours

- Yellow
- Blue
- Black
- Red