

# ASA PVC IMPACT DOORS

**The double acting door you can rely on...**

Your ASA doors are engineered to withstand the toughest punishment so you will benefit in savings on costly down time and repairs, AND you have a choice to suit your exacting needs!

## ASA PVC IMPACT DOOR

### PEDESTRIAN AND LIGHT VEHICULAR ACCESS DOORS.

The ASA range is your perfect answer for your pedestrian and light vehicle doorways, manufactured to your exacting requirements for unique, cost efficient, modular componentry.

### EASY DOOR SELECTION

PVC Impact doors are suitable for openings up to 2500mm high and 1800mm wide for double /single door arrangements. With the inclusion of reinforcing gussets, doors can be increased in size to 3000mm high x 2200mm wide.

### EFFECTIVE ENVIRONMENT BARRIER

Because of the standard single blade PVC seal to the back edge of the door frame, the PVC Impact door is one of the most efficient doors available against draughts, wind, noise, heat, cold, dust, fumes and insects. Using special grade PVC, doors can be used as ante-room doors in freezer applications.



ASA PVC Impact doors are manufactured to local conditions and environmental requirements.

**Proudly made 100% in Western Australia.**



**ASA FLEXIBLE DOORS PTY LTD**  
UNIT 2, 47 HOLDER WAY, MALAGA WA 6090  
PO BOX 2390, MALAGA WA 6090

PH 9248 1055  
sales@asaflexibledoors.com.au  
A.B.N. 79 096 908 100

# ASA PVC IMPACT DOORS

**There's an ASA solution to suit every doorway problem!**

## ASA PVC IMPACT DOOR

### EASY CARE DESIGN

All parts can be quickly and economically replaced, using standard sized stock components, and should the PVC become damaged, it is easily repaired or replaced. Normal care consists of occasional washing with suitable detergent.

### STRONG ALUMINIUM EXTRUSION

this unique, multi-purpose profile is utilized for both the stile and the head, and to retain the spring mechanism and bottom pivot. Continuous grooves retain the sealing strip and PVC panel over their entire length. All sections have a tough anodized finish for attractive appearances and extra protection.

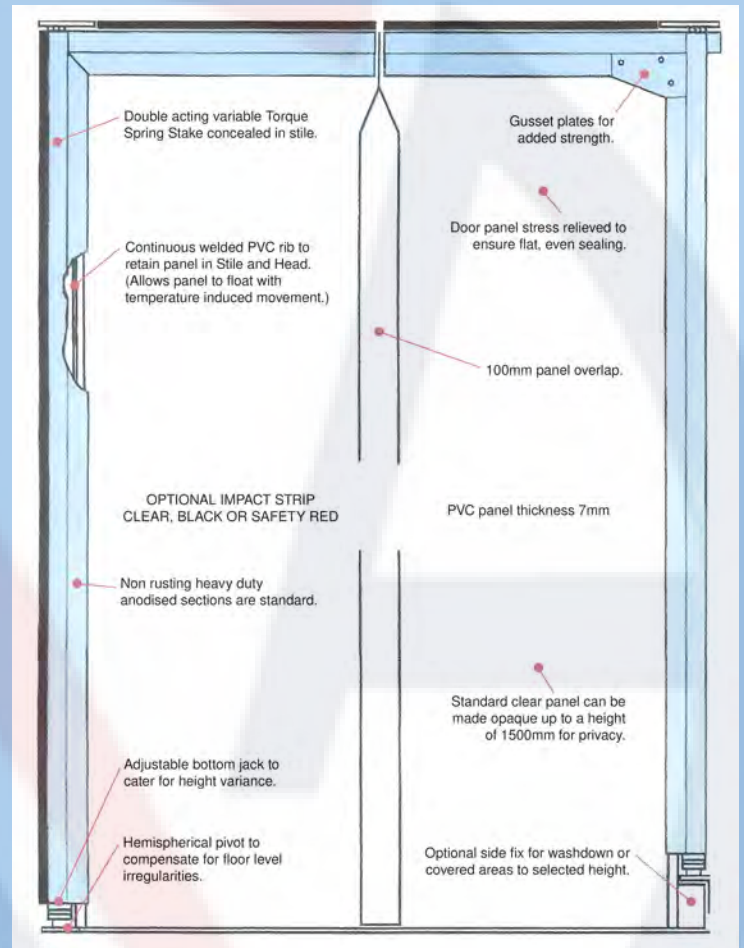
### EFFECTIVE DUST SEALING

To provide more efficient sealing between the door frame and jambs, ASA PVC Impact doors incorporate a brush or PVC seal strips, neatly located in a groove along the back of both the stile and head profiles.



### PVC SEALS

**For wash down and food/ hygiene areas**



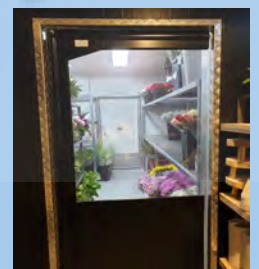
### COLOURED PANELS

Apart from Clear PVC we can also offer Black, Opaque and Grey PVC on our PVC Impact Doors to ensure privacy.



### FINISHES

**Powercoating and sign writing to suit your special requirements.**



**ASA FLEXIBLE DOORS PTY LTD**  
**UNIT 2, 47 HOLDER WAY, MALAGA WA 6090**  
**PO BOX 2390, MALAGA WA 6090**

PH 9248 1055  
sales@asaflexibledoors.com.au  
A.B.N. 79 096 908 100