



Clearly the best

Industrial Door Solutions



M.T.I. QUALOS



M.T.I. Qualos Pty. Ltd. is an Australian owned company that commenced operating in 1946. Leaders within our field, we have been manufacturing industrial transparent flexible P.V.C. Swing and Strip Doors and high speed Roll-Fast Doors since 1970.

Located in West Heidelberg, Victoria, we produce a high quality range of industrial doors to suit any application.

With Agents all around Australia, M.T.I. Qualos Pty. Ltd. are ever conscious of its role in industry and are constantly searching for new and improved manufacturing methods, new and improved products and most of all, the ways and means to assist our continued growth in the field.

For further information please contact:

M.T.I. Qualos Pty. Ltd.

55 Northern Road, West Heidelberg, Vic. 3081.

Telephone: +61 (0)3 9450 1900

Facsimile: +61 (0)3 9450 1947

Free call: 1300 135 539

Email: sales@mtiqualos.com.au

Website: www.mtiqualos.com.au

S1000 ROLL-FAST DOOR	4-5
SI 163VSD ROLL-FAST DOOR.....	6-7
S900 FREEZER ROLL-FAST DOOR	8-9
S1100 ROLL-FAST DOOR	10-11
S800 ROLL-FAST DOOR.....	12-13
S1300 ROLL-FAST DOOR	14-15
S915SE SOFT EDGE INTERNAL DOOR	16-17
S2010SE / S2020SE SOFT EDGE EXTERNAL	18-19
FLEXIBLE “SEE-THRU” SWING DOOR.....	20-21
ALUMINIUM FLEXIBLE “SEE-THRU” P.V.C. SWING DOOR.....	22-23
INSULATED TRAFFIC DOOR	24-25
INDUSTRIAL SECTIONAL DOOR	26-27
FLEXIBLE “SEE-THRU” STRIP DOOR.....	28-29
M.T.I. WELDING SCREEN	30-31
FLEXIBLE “SEE-THRU” SWING DOOR SPARE PARTS	32
ALUMINIUM FLEXIBLE “SEE-THRU” P.V.C. SWING DOOR SPARE PARTS...	33
“SEE-THRU” P.V.C. ROLLS	34
“SEE-THRU” STRIP DOOR HEAD SECTIONS.....	35



Maintenance

Our extensive service network throughout Australia means that we can service any door in most cases. This is a major advantage in terms of maintenance breakdowns or repairs.

Service and spare parts, should they be required are readily available.



Control System

M.T.I. Roll-Fast Doors are supplied with frequency inverters as standard. This system ensures quick, safe and low wear door travel. By using the frequency inverters, higher opening and closing speeds can be achieved. This extends the service life of the door considerably.



Warranty:

All M.T.I. Doors are warranted to be free of any defects in workmanship and materials under normal use for a period of twelve (12) months.



S1000 ROLL-FAST DOOR

IMPROVES PRODUCTIVITY WITHIN INTERNAL APPLICATIONS



S1000 ROLL-FAST DOOR

IMPROVES PRODUCTIVITY WITHIN INTERNAL APPLICATIONS



Maximum Door Size

4000 mm High x 4000 mm Wide

Manufactured in Australia, these S1000 Roll-Fast Doors are suitable for all internal applications where temperature control is vital.

Opening speed of up to 1200mm per second can be achieved to reduce any down time. Even under the most demanding around-the-clock use, the S1000 Roll-Fast Door will run effectively.

Standard Features

**Reverse Edge
Photo Electric Cell**

Control Options

- Inductive Loops
- Microwave Sensors
- Push Buttons
- Infrared Sensors
- Remote Control
- Interlock Facility



Panel Colours

- Yellow
- Blue
- Black
- Red

Door specifications

S1000 Technical drawing

APPLICATION: Internal.

DOOR SIZE:

The S1000 Roll-Fast Doors are produced for internal openings up to 4000mm High x 4000mm Wide, and are capable of being installed in areas with an air-pressure differential of no more than 15 Pascals.

DOOR PANEL:

All doors are fitted with a durable vinyl panel with a clear PVC centre section 1000mm high x the full width of the door opening enabling vision through the door.

DOOR SPEED:

The standard operational speed of the S1000 Roll-Fast Door is: 1000mm-1200mm/Sec. (with Speed Variator).

SAFETY FEATURES:

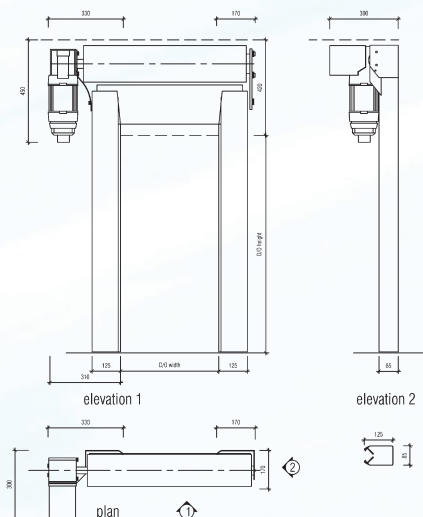
A Photo Electric Cell is installed within the door posts to prevent the door closing, should the Photo Electric Cell be obstructed.

ACTIVE REVERSING EDGE:

Within the bottom rail a self-guarding safety edge system is fitted. This system, when triggered, will return the door to the open position and "lock" the door in the open position until reset.

CONTROL PANEL:

A Digital Display is supplied to all S1000 Roll-Fast Door control panels. Should a fault occur, it will detail what the fault is and our comprehensive manual will help you with a solution to the problem.



POWER SUPPLY:

S1000 Series: A 10 ampere, single phase, neutral and earth power supply complete with isolating switch.

DOOR FINISH:

Standard galvanised or optional powder coated to door posts.





SI 163VSD ROLL-FAST DOOR

INTERNAL DOOR WITH A RELIABLE APPLICATION



SI 163VSD ROLL-FAST DOOR

INTERNAL DOOR WITH A RELIABLE APPLICATION



Maximum Door Size

4500 mm High x 4000 mm Wide

The SI 163VSD Roll-Fast Door is manufactured in Australia and is suitable for all internal applications.

With an opening speed of up to 1500mm per second the SI 163VSD Roll-Fast Door is capable of operating quietly and will allow traffic to enter and exit the opening virtually without stopping.

The SI 163VSD Roll-Fast Doors are also supplied with an emergency opening device should the power supply fail.

A modern designed motor / gearbox complete with a VSD unit provides a soft start and soft stop on closing. This means even under continuous operation virtually no wear, and as a result, minimum maintenance, service and spare parts. Should they be required, are readily available.

Power required 240 volts single phase with earth and neutral.

Door specifications

SI 163VSD Technical drawing

APPLICATION: Internal.

DOOR SIZE:

The SI 163VSD Roll-Fast Doors are produced for internal openings up to 4500mm High x 4000mm Wide, and are capable of being installed in areas with an air-pressure differential of no more than 15 Pascals.

DOOR PANEL:

All doors are fitted with a durable vinyl panel with a clear P.V.C. centre section 1000mm high x the full width of the door opening enabling vision through the door.

EMERGENCY ACCESS:

Via hand chain.

DOOR SPEED:

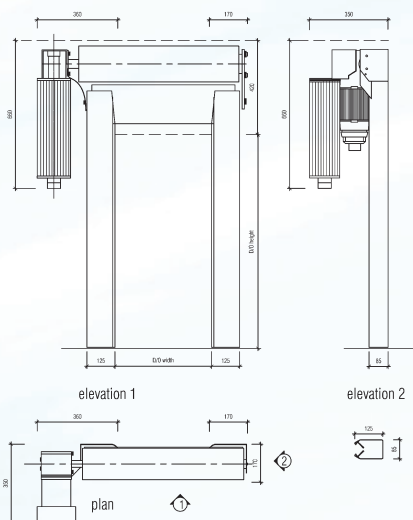
The standard operational speed of the SI 163VSD Roll-Fast Door is: 1200mm-1500mm/Sec. (with Speed Variator mounted to motor / gearbox).

SAFETY FEATURES:

A Photo Electric Cell is installed within the door posts to prevent the door closing, should the Photo Electric Cell be obstructed.

ACTIVE REVERSING EDGE:

Within the bottom rail a self-guarding safety edge system is fitted. This system, when triggered, will return the door to the open position and "lock" the door in the open position until reset.



CONTROL PANEL:

A Digital Display panel is supplied with all SI 163VSD Roll-Fast Doors.

POWER SUPPLY:

SI 163VSD Series: A 10 ampere, single phase, neutral and earth power supply complete with isolating switch.

DOOR FINISH:

Standard galvanised or optional powder coated to door posts.

Standard Features

Reverse Edge
Photo Electric Cell

Control Options

- Inductive Loops
- Microwave Sensors
- Push Buttons
- Infrared Sensors
- Remote Control
- Interlock Facility



Panel Colours

- Yellow
- Blue
- Black
- Red



S900 FREEZER ROLL-FAST DOOR

WITHHOLD TEMPERATURE LOSS IN FREEZER ROOMS



S900 FREEZER ROLL-FAST DOOR

WITHHOLD TEMPERATURE LOSS IN FREEZER ROOMS



Maximum Door Size

4000mm High x 3500mm Wide

The S900 Freezer Roll-Fast Door will reduce air loss from your existing door opening.

Manufactured to suit freezer rooms of up to -18°C the S900 Freezer Roll-Fast Door is powered by a mechanical limit motor / gearbox and frequency inverter control system that provides an opening speed of up to 1000mm per second. Also supplied with bottom door post heaters and self opening timer within its control panel to reduce any ice build-up on the door posts or vinyl panel.

Door specifications

S900 Technical drawing

APPLICATION: Internal.

DOOR SIZE:

The S900 Freezer Roll-Fast Doors are produced for internal openings up to 4000mm High x 3500mm Wide, and are capable of being installed in areas with an air-pressure differential of no more than 15 Pascals.

DOOR PANEL:

All doors are fitted with a durable 2mm thick vinyl panel.

DOOR SPEED:

The standard operational speed of the S900 Freezer Roll-Fast Door is between 900mm - 1000mm per second.

SAFETY FEATURES:

A through beam is installed within the door posts to prevent the door closing, should the beam be obstructed.

ACTIVE REVERSING EDGE:

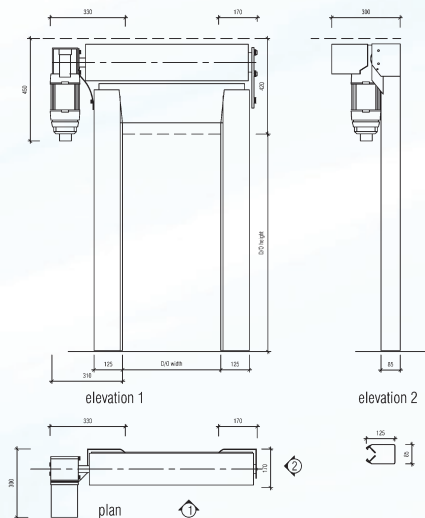
Within the bottom rail a self-guarding safety edge system is fitted. This system, when triggered will return the door to the open position and "lock" the door in the open position until reset.

CONTROL SYSTEM:

This system is micro processor based with a speed variator, which is specifically designed for the operation of the automatic door, with the flexibility to meet the changing needs of our customers.

DOOR HEATERS:

Door heaters are supplied to the bottom of the door posts to prevent ice forming.



TIMER:

The control panel is programmed to open the door automatically every 20 minutes to reduce ice build-up.

POWER SUPPLY:

A 10 ampere single phase neutral and earth power supply complete with isolating switch.

DOOR POST FINISH:

Standard galvanised or optional powder coated to door posts.

Standard Features

Reverse Edge
Photo Electric Cell

Control Options

- Inductive Loops
- Microwave Sensors
- Push Buttons
- Infrared Sensors
- Remote Control
- Interlock Facility



Panel Colours

- Yellow • Blue
- Red • Orange





S1100 ROLL-FAST DOOR

QUICK AND EASY ACCESS, RELIABILITY AND PERFORMANCE



S1100 ROLL-FAST DOOR

QUICK AND EASY ACCESS, RELIABILITY AND PERFORMANCE



Maximum Door Size

4250mm High x 4000mm Wide

The S1100 Roll-Fast Door is designed to suit a large variety of door applications. If speed, safety and reliability are features you require, the S1100 Roll-Fast Door will suit you with an opening speed of up to 1300mm per second.

Constructed from minimal moving parts also reduces any maintenance work. Complete with a special tensioning spring mechanism, this ensures the door curtain is kept taut at all times providing a complete weather seal. Suitable for both internal/external applications.



Door specifications

S1100 Technical drawing

APPLICATION: External / Internal.

DOOR SIZE:

The S1100 Roll-Fast Doors are produced for internal and external openings up to 4250mm High x 4000mm Wide.

DOOR PANEL:

All doors are fitted with a durable vinyl panel with a clear PVC centre section approximately 900mm – 1200mm high x the full width of the door opening.

DOOR SPEED:

The standard operational speed of the S1100 Roll-Fast Door is between 1100mm and 1300mm per second with a Speed Variator.

SAFETY FEATURES:

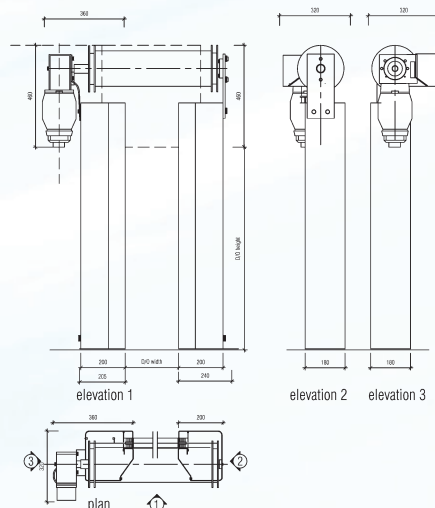
A Photo Electric Cell is installed within the door posts to prevent the door closing, should the Photo Electric Cell be obstructed.

ACTIVE REVERSING EDGE:

Within the bottom rail a self guarding safety edge system is fitted. This system, when triggered will return the door to the open position and "lock" the door in the open position until reset.

CONTROL PANEL:

A Digital Display is supplied to all S1100 Roll-Fast Door control panels. Should a fault occur, it will detail what the fault is and our comprehensive manual will help you with a solution to the problem.



POWER SUPPLY:

A 10 ampere, single phase, neutral and earth power supply complete with isolating switch.

DOOR FINISH:

Standard galvanised or optional powder coated to door posts.

Standard Features

Reverse Edge

Photo Electric Cell

Control Options

- Inductive Loops
- Push Buttons
- Remote Control
- Interlock Facility
- Microwave Sensors
- Infra Red Sensors



Panel Colours

- Yellow
- Blue
- Red
- Orange



Optional ventilation



S800 ROLL-FAST DOOR

4MM THICK CLEAR P.V.C. DOOR WITH ROBUST VERTICAL OPENING



S800 ROLL-FAST DOOR

4MM THICK CLEAR P.V.C. DOOR WITH ROBUST VERTICAL OPENING



Maximum Door Size

5500mm High x 5850mm Wide

A heavy duty robust door with 4mm thick fully transparent curtain ensures safe transport routes and good visual contact.

Generally used for external applications, this versatile S800 Roll-Fast Door is ideal for use in manufacturing and the food industry.

The opening speed of 0.8 m/s is designed for doors up to 5500mm High x 5850mm Wide in normal operation. The tried-and-tested inversion relay control system is entirely sufficient to ensure safe door operation.

Fold-out side frames facilitate maintenance procedures. The operator and shaft are borne by the cantilever side frames housing the photocell, energy chain and the side tensioning and pull mechanism. Brush seals reduce drafts.

Where the S800 Roll-Fast Door is exposed to high wind pressures, we recommend using additional aluminium wind safety profiles to give the curtain the necessary rigidity. By using the wind safety profile, a vinyl panel or fully transparent curtain can also be combined.

Door specifications

S800 Technical drawing

APPLICATION: External.

DOOR SIZE:

Up to 5500mm High x 5850mm Wide maximum.

DOOR PANEL:

Made from heavy duty 4mm thick clear P.V.C. that offers 100% vision. As an option a 1.6mm thick vinyl panel with clear centre section can also be supplied.

WIND LOAD:

The S800 Roll-Fast Door is capable of withstanding wind loads up to 74kph. Lateral belts, tension springs and pulley systems keep the P.V.C. curtain taut during all operations.

As an option, it can be supplied with wind extensions that can increase wind load to 95 kph.

DOOR SPEED:

The standard operational speed of the S800 Roll-Fast Door is 800mm/sec.

SAFETY FEATURES:

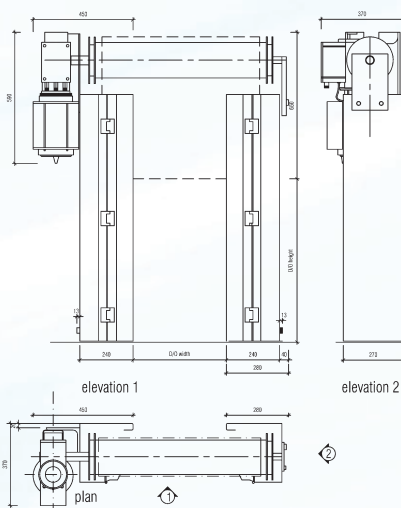
A Photo Electric Cell is installed within the door posts to prevent the door closing, should the Photo Electric Cell be obstructed.

ACTIVE REVERSING EDGE:

Within the bottom rail a self guarding safety edge system is fitted. This system, when triggered will return the door to the open position and "lock" the door in the open position until reset.

CONTROL SYSTEM:

This system is micro processor based with a speed variator which is specifically designed



for the operation of the automatic door, with the flexibility to meet the changing needs of our customers.

POWER SUPPLY:

A 10 ampere, three phase, neutral and earth power supply complete with isolating switch.

DOOR FINISH:

Standard galvanised or optional powder coated to door posts.

Standard Features

Reverse Edge Photo Electric Cell

Control Options

- Inductive Loops
- Microwave Sensors
- Push Buttons
- Infrared Sensors
- Remote Control
- Interlock Facility



Panel Colours

- Yellow
- Blue
- Black
- Red



S1300 ROLL-FAST DOOR

QUICK MANUAL OPENING FOR EMERGENCY ACCESS



S1300 ROLL-FAST DOOR

QUICK MANUAL OPENING FOR EMERGENCY ACCESS



Maximum Door Size

5000mm High x 4500mm Wide

The S1300 Roll-Fast Door is designed for quick manual opening in case of power black outs.

Thanks to the counter balance weight system, the S1300 Roll-Fast Door can be opened by pull rope in no time at all.

This S1300 Roll-Fast Door door can be manufactured to a daylight opening of 5000mm High x 4500mm Wide.

An opening speed of 1300mm per second makes this door suitable for both internal and external applications.

Compact direct drive with integral gearbox safety device, electronic limit switches, frequency inverter controls with 7 segment display, function-monitoring, closing edge safety device, photocell to monitor the traffic path and brush seals to reduce drafts and ensure a quiet door action.

Door specifications

S800 Technical drawing

APPLICATION: External / Internal.

DOOR SIZE:

5000mm High x 4500mm Wide maximum.

DOOR PANEL:

All doors are fitted with a durable vinyl panel with a clear P.V.C. centre section approximately 900mm – 1200mm high x the full width of the door opening.

DOOR SPEED:

The standard operational speed of the S1300 Roll-Fast Door is between 1300mm and 1500mm per second with a Speed Variator.

SAFETY FEATURES:

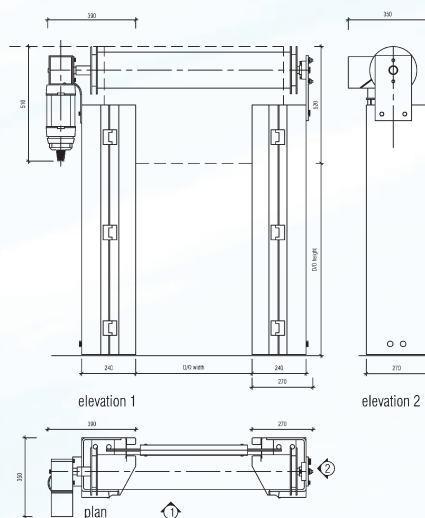
A Photo Electric Cell is installed within the door posts to prevent the door closing, should the Photo Electric Cell be obstructed.

ACTIVE REVERSING EDGE:

Within the bottom rail a self guarding safety edge system is fitted. This system, when triggered, will return the door to the open position and "lock" the door in the open position until reset.

CONTROL PANEL:

A Digital Display is supplied to all S1300 Roll-Fast Door Control Panels. Should a fault occur, it will detail what the fault is and our comprehensive manual will help you with a solution to the problem.



EMERGENCY OPENING SYSTEM:

In case of power failure, a release mechanism is fitted to all S1300 Roll-Fast Doors.

POWER SUPPLY:

A 10 ampere, single phase, neutral and earth power supply complete with isolating switch.

DOOR FINISH:

Standard galvanised or optional powder coated to door posts.

Standard Features

**Reverse Edge
Photo Electric Cell**

Control Options

- Inductive Loops
- Push Buttons
- Remote Control
- Interlock Facility
- Microwave Sensors
- Infra Red Sensors



Panel Colours

- Yellow
- Blue
- Black
- Red



S915SE SOFT EDGE ROLL-FAST DOOR

INTERNAL DOOR WITH SOFT EDGE BOTTOM PROFILE



*S915SE with a
flexible curtain –
robust, fast and
efficient*



S915SE SOFT EDGE ROLL-FAST DOOR

INTERNAL DOOR WITH SOFT EDGE BOTTOM PROFILE



The Internal door with a Soft Edge bottom profile

The S915SE Roll-Fast Door is particularly efficient thanks to the anti-crash system.

When goods are being transferred between areas, it is important that a crash does not hold up the process - an internal door must be operative again as quickly as possible. Thanks to the SoftEdge bottom profile with anti-crash system, M.T.I. offers the optimum solution: efficient and at the same time safe.

Control Options

- Inductive Loops
- Microwave Sensors
- Push Buttons
- Infrared Sensors
- Remote Control
- Interlock Facility



Panel Colours

- Yellow
- Blue
- Black
- Red



S 915SE Door specifications

APPLICATION: Internal.

DOOR SIZE: Height max: 5000mm
Width Max: 5000mm

DOOR SPEED:

Opening: 0.8/1.5 m/s Closing: 0.8/0.8 m/s

CURTAIN THICKNESS:

Fabric/vision panel 1.5/2.0 mm

WIND PROTECTION:

Aluminium profile.

ANTI-CRASH SYSTEM:

Soft Edge System

INVERSION RELAY CONTROLS:

Frequency converter controls on request.

OPTIONS:

Emergency opening via counterweight

Operator/shaft cladding

Stainless steel version



S2010SE/S2020SE SOFT EDGE ROLL-FAST DOOR

FOR EXPOSED ENVIRONMENTS OR HIGH TRAFFIC FREQUENCY



S2010 SE/S2020 SE SOFT EDGE ROLL-FAST DOOR

FOR EXPOSED ENVIRONMENTS OR HIGH TRAFFIC FREQUENCY



Steel wind protectors for the door types S2010SE and S2020SE

Integrated into a pocket of the curtain with twin track rollers at the sides for a quiet, smooth door action and improved resistance to higher wind pressure.



The fast external door with anti-crash protection

External doors are damaged more frequently than internal doors, e.g. by forklift trucks, so this is where the collision protections system comes into its own. Downtime and repair costs are considerably reduced.



S 2010SE Soft Edge Roll-Fast Door specifications

APPLICATION: Internal door/wind protected
DOOR SIZE:

Height max: 5000mm
Width max: 4500mm

DOOR SPEED:

Opening: 3.0 m/s
Closing: 0.8 m/s

CURTAIN THICKNESS:

Fabric/vision panel 1.5/2.0 mm

WIND PROTECTION:

Spring steel wind protectors

ANTI-CRASH SYSTEM:

SoftEdge System

CONTROLS:

Frequency inverter.

OPTIONS:

Emergency opening via counterweight
Operator/shaft cladding
Stainless steel version

S 2020SE Soft Edge Roll-Fast Door specifications

APPLICATION: External / Internal.
DOOR SIZE:

Height max: 6000mm
Width max: 6000mm

DOOR SPEED:

Opening: 3.0 m/s
Closing: 0.8 m/s

CURTAIN THICKNESS:

Fabric/vision panel 1.5/2.0 mm

WIND PROTECTION:

Spring steel wind protectors

ANTI-CRASH SYSTEM:

SoftEdge System

CONTROLS:

Frequency inverter.

OPTIONS:

Emergency opening via emergency hand chain
Operator/shaft cladding

The quiet door for draft exposed environments

Optimise your operational procedures by installing a customised S2010SE / S2020SE Roll-Fast Door.

These S2010SE / S2020SE Roll-Fast Doors will reduce your energy costs through rapid opening speeds of up to 3000mm p/s and also control temperature loss, noise levels and high wind problems.

All doors are equipped with spring steel wind bars that give the door curtain the necessary stability when high wind pressure is present.

Another feature of the S2010SE / S2020SE Roll-Fast Door is the bottom flexible rubber reverse edge. Should impacted with traffic occur, the door curtain is capable of being re-positioned easily with minimal effort.

Control Options

- Inductive Loops
- Microwave Sensors
- Push Buttons
- Infrared Sensors
- Remote Control
- Interlock Facility



Panel Colours

- Yellow
- Blue
- Black
- Red





Swing Door Selection Guide

Type	Application	Maximum Size	Door Panels
Medium Duty	Pedestrian & non-motorised	3600mm H x 3050mm W	5mm Thick
Medium Duty	Pedestrian traffic only	2900mm H x 2400mm W	5mm Thick
Heavy Duty	Industrial & fork lift truck	3660mm H x 3050mm W	7mm Thick
Heavy Duty	(Tandem Head)	4200mm H x 3600mm W	7mm Thick
Note: single doors are available in both medium and heavy duty types			

FLEXIBLE "SEE-THRU" P.V.C. SWING DOOR



These Flexible "See-Thru" Swing Doors are ideal for all industrial and commercial applications including factories, food processing plants, transport terminals, retail stores, supermarkets, cool stores, meat works, hospitals etc.

Manufactured in Australia they offer the most advanced features of any flexible door on the market today.

Constructed from tough resilient P.V.C. and a cold drawn steel frame, they have proven to be the ideal answer for functional style dividers.

Flexible "See-thru" Doors have the advantage of opening with a light push of the hand trolley, forklift truck or transport vehicle and automatically close after entry.

Despite their great flexibility, they keep out draughts and dust, are noiseless in operation and act as a barrier between areas of different temperatures.



Completely clear, unrestricted views

Being completely clear, the Flexible "See-Thru" Swing Doors give an unrestricted view of oncoming traffic and, if required, can remain open in the 90° position.

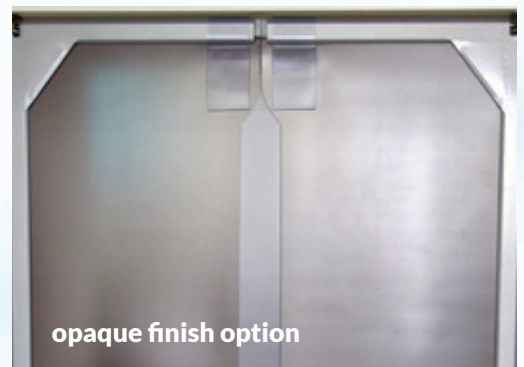
Flexible "See-Thru" Swing Door frames are a fully welded construction with no rivets or bolts used in the manufacture of the frame. Approximately 100mm overlap of the panels in the centre and unique free-hanging method of framing P.V.C. ensures a perfect seal under all conditions. No buckling, no tearing, no uneven hanging.

Standard finish of the door frames is hammertone grey enamel paint.

Optional finish: Hot dipped galvanised frames for cool rooms, freezer rooms and food preparation areas. Powder coating is available on request.

With patented self-closing ball hinges, Flexible "See-Thru" Swing Doors are adjustable over a wide range of closing pressures. Doors will remain open in a 90° position if required and will close under a light push.

For door openings where the height exceeds 3600mm (max. height of heavy duty doors) a see-thru gravity flap can be installed above the swing doors to provide a more economical solution. Where the width of the door opening exceeds 3000mm a tandem heavy duty type swing door is required.



opaque finish option



ALUMINIUM FLEXIBLE “SEE-THRU” P.V.C SWING DOORS



Aluminium Flexible Swing Door Selection Guide

Type	Application	Maximum Size	Door Panels
Medium Duty	Pedestrian & non-motorised	2800mm H x 2400mm W	5mm Thick
Heavy Duty	Light Industrial & hand truck vehicles	2800mm H x 2400mm W	7mm Thick
Note: single doors are available in both medium and heavy duty types			

ALUMINIUM FLEXIBLE “SEE-THRU” P.V.C SWING DOORS



Completely clear or with unrestricted views

Aluminium Flexible “See-Thru” P.V.C. Swing Doors are clearly the best flexible solution for pedestrian traffic and light non-motorised vehicles.

These doors can be installed in industrial and commercial applications where dust, drafts and noise may be an issue.

Made from an anodised aluminium frame that pivots in both directions and complete with variable tension return spring. (Stay open magnets are available as an optional extra).

Doors are generally installed under lintel (as shown) or side mounted as an option.

In addition, we can manufacture the Aluminium Flexible “See-Thru” P.V.C. Swing Door panels with either black or grey P.V.C. in lieu of conventional clear or opaque finish.

These Aluminium Flexible “See-Thru” P.V.C. Swing Doors are suitable for food manufacturing plants, hospitals, supermarkets, meat works and specialty retail stores.



Side mount spring



Lintel mount spring



INSULATED TRAFFIC DOOR



INSULATED TRAFFIC DOOR



Rugged and smooth operating

These rugged Insulated Traffic Doors operate smoothly, require little maintenance and are built to survive in even the toughest applications. i.e. supermarkets, hospitals, restaurants, laboratories even cool rooms.

Like all of our manufactured door products, these Insulated Traffic Doors are engineered to perform at a high standard.

Stylish enough for the finest retail application and insulated so there is no loss of cool air within refrigerated applications.

They offer long term access solutions in manufacturing facilities, warehouses, walk-in coolers or separating the sales floor from the back of house area.

Insulated Traffic Doors are manufactured from a rigid PVC internal framework and high impact ABS plastic outer skins and has an overall thickness of 44mm thick.

To reduce any air loss, the doors are also supplied with a complete full perimeter gasket made from a semi rigid rubber strip.

These Insulated Traffic Doors can be manufactured in both single or pair, depending on the application.

Standard outer skin panel colours: Black, dark grey, light grey or beige (other colours can be supplied upon request).

Standard window sizes:

740mm High x 235mm Wide or
540mm High x 540mm Wide.

To prolong the life of these doors they are supplied with spring impact bumpers or flat impact panels which help cushion the impact of motorised or hand traffic.



Buffer panel



INDUSTRIAL SECTIONAL DOOR



Maximum Door Size

8000mm High x 8000mm Wide

Industrial Sectional Doors are an ideal solution for business and production areas and are manufactured to suit any room construction/application within the maximum door size.

Advanced door technologies are used to ensure the long term fail-free operation with high intensity. Special elements, which increase their reliability and wear resistance are provided in the structure of doors and guides.

All Industrial Sectional Doors are manufactured with a high sealing system which increases the thermal insulation.

Eleven different types of lift solutions ensures that M.T.I. Qualos can provide a door to suit most applications and can also supply windows within the sectional insulated panels.

Due to its special structure, a window can be fitted snug against the door leaf.

Standard window sizes:

635mm x 330mm or
607mm x 202mm.

Technical Details:

Technical Parameters	
Heat conductivity factor:	0.38 W/m°C
Acoustic insulation:	24 dB
Wind load:	3 class* (200 km/h)
Water tightness:	1 class (water pressure 30 Pa)
Lifting force:	up to 40 kg
Door lift weight:	17 kg/m ²

*According to EN1324-1





Strip Door Selection Guide

Type	Application	Thickness
Extra Light Duty	Shop fronts & residential use	1.5mm x 75mm clear/coloured
Light Duty	Pedestrian & light traffic areas	2mm clear
Medium Duty	Commercial & Industrial	3mm & 4mm clear
Medium/Heavy Duty	Heavy Industrial	5mm clear
Note: Freezer type strip doors available in 2, 3, 5mm thickness only		

FLEXIBLE “SEE-THRU” STRIP DOOR



Economical answer to various barrier problems

Flexible “See-Thru” Strip Doors are an economical answer to various barrier problems including shops, factories, warehouses, food processing plants, meat works, cool rooms and freezer rooms.

They are manufactured overlap-style to give more positive protection from dust and drafts and to provide the solution to temperature control problems.

Manufactured from clear or coloured flexible P.V.C., they offer an economical and hygienic solution to any door opening.

Unlike hard-to-open closed doors, they are easy to walk through and offer 100% clear view.

All Flexible “See-Thru” Strip Doors are produced by the finest available quality P.V.C. which will provide you with years of trouble free service.

Our extra light duty P.V.C. strips can be used for shop fronts in various colours.

They are easy to install and can be removed for cleaning to create that new look.

As part of our range, we also supply P.V.C. ribbed strips in both normal or freezer grade.



Sliding head section



Hook on / Hook off head section



WELDING SCREEN





Protection for your employees

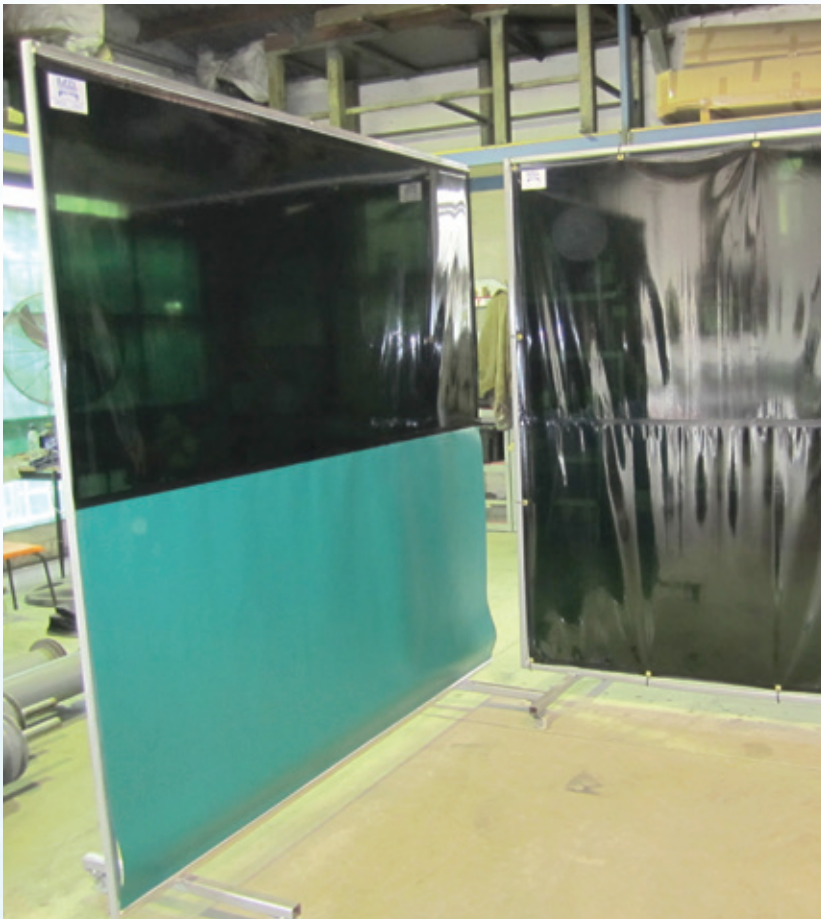
Custom made Welding Screens manufactured by M.T.I. Qualos Pty. Ltd. will assist and guard your employees against harmful ultra-violet rays associated with welding.

All our custom made Welding Screens can be manufactured in a variety of different sizes.

Use in a permanent area or have your screen constructed out of steel tubing complete with heavy duty caster wheels for transport to any location.

All of our Welding Screens can be manufactured with either P.V.C. strips or vinyl panels.

Permanently fixed or sliding track systems that can be pushed out of the way so you can have clear access at any time if required.

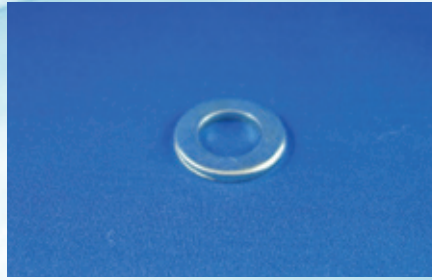


Sliding Track System

"SEE-THRU" SWING DOOR SPARE PARTS



BOLT



14MM WASHER



STAY CLOSED ROLLING PIECE



STAY OPEN ROLLING PIECE



PRISM



PLUNGER



BASE PLATE



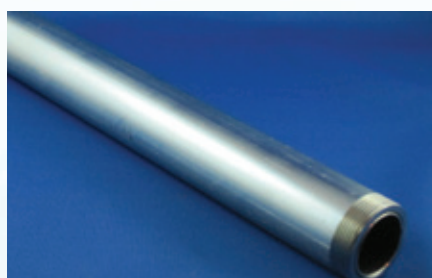
SHOULDER SCREW WASHER



SHOULDER SCREW



WELD IN ANGLE



SPRING SIZE 1, 2 OR 3



COMPLETE TOP HINGE



LOWER HINGE WELD IN BRACKET



COMPLETE LOWER HINGE



SPACERS

ALUMINIUM FLEXIBLE "SEE-THRU" SWING DOOR SPARE PARTS



TOP HINGE MOUNT SIDE FIX



TOP LINTEL MOUNT SPRING



LEFT/RIGHT HINGE COVERS



ALUMINIUM GUSSET/STEEL GUSSET



HOLD OPEN MAGNET



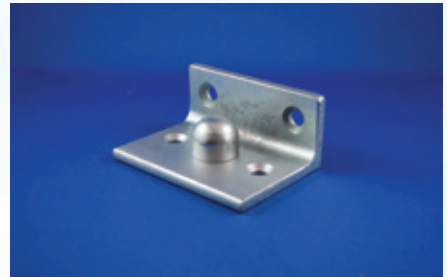
TOP SEAL



SIDE SEAL



COMPLETE BOTTOM PIVOT



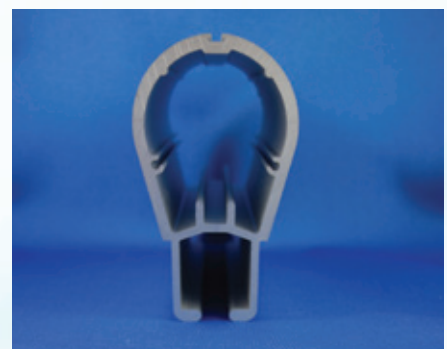
BOTTOM PIVOT MOUNT



END CAP



TEE NUTS (MALE & FEMALE)



ALUMINIUM DOOR PROFILE

M.T.I Qualos stocks a large range of P.V.C. products and can manufacture, deliver and install to customer specifications.

Standard roll sizes

THICKNESS & WIDTH	P.V.C. TYPE	LENGTH OF ROLL	WEIGHT KG
1MM X 1370MM	NORMAL	20 MTR	37
1.5MM X 75MM	NORMAL	100 MTR	14
1.5MM X 75MM	NORMAL COLOUR	100 MTR	14
2MM X 100MM	NORMAL	50 MTR	12
2MM X 100MM	FREEZER	50 MTR	12
2MM X 100MM	RIBBED NORMAL	50 MTR	13
2MM X 100MM	RIBBED FREEZER	50 MTR	13
2MM X 200MM	NORMAL	50 MTR	24
2MM X 200MM	FREEZER	50 MTR	24
2MM X 200MM	RED	50 MTR	24
2MM X 200MM	RIBBED NORMAL	50 MTR	26
2MM X 200MM	RIBBED FREEZER	50 MTR	26
2MM X 300MM	BLACK	50 MTR	37
2MM X 300MM	UVI WELDING RED	50 MTR	37
2MM X 1370MM	NORMAL	20 MTR	74
3MM X 150MM	NORMAL	50 MTR	27
3MM X 150MM	FREEZER	50 MTR	27
3MM X 150MM	RIBBED NORMAL	50 MTR	27
3MM X 150MM	RIBBED FREEZER	50 MTR	27
3MM X 300MM	NORMAL	50 MTR	55
3MM X 300MM	FREEZER	50 MTR	55
3MM X 300MM	RIBBED NORMAL	50 MTR	55
3MM X 300MM	RIBBED FREEZER	50 MTR	55
3MM X 1000MM	NORMAL	20 MTR	74
3MM X 1200MM	NORMAL	20 MTR	88
3MM X 1500MM	NORMAL	20 MTR	110
3MM X 2200MM	NORMAL	20 MTR	162
4MM X 1000MM	NORMAL	20 MTR	97
4MM X 1200MM	NORMAL	20 MTR	117
4MM X 1500MM	NORMAL	20 MTR	147
4MM X 2200MM	NORMAL	20 MTR	215
4MM X 2200MM	FREEZER	20 MTR	215
5MM X 150MM	NORMAL	50 MTR	46
5MM X 150MM	FREEZER	50 MTR	46
5MM X 200MM	NORMAL	50 MTR	61
5MM X 200MM	FREEZER	50 MTR	61
5MM X 300MM	NORMAL	50 MTR	91
5MM X 300MM	FREEZER	50 MTR	91
5MM X 1000MM	NORMAL	20 MTR	122
5MM X 1000MM	HARD	20 MTR	122
5MM X 1200MM	NORMAL	20 MTR	147
5MM X 1200MM	HARD	20 MTR	147
5MM X 1500MM	NORMAL	20 MTR	183
5MM X 1500MM	FREEZER	20 MTR	183
5MM X 1500MM	NORMAL TEXTURED	20 MTR	183
7MM X 1000MM	NORMAL	20 MTR	170
7MM X 1200MM	NORMAL	20 MTR	205
7MM X 1200MM	FREEZER	20 MTR	205
7MM X 1200MM	BLACK	20 MTR	205
7MM X 1200MM	GREY	20 MTR	205
7MM X 1500MM	NORMAL	20 MTR	256
7MM X 1500MM	FREEZER	20 MTR	256
7MM X 2200MM	NORMAL	20 MTR	375
7MM X 2200MM	FREEZER	20 MTR	375
7MM X 1500MM	NORMAL TEXTURED	20 MTR	256
7MM X 1500MM	BLACK TEXTURED	20 MTR	256
7MM X 1500MM	GREY TEXTURED	20 MTR	256

Applications to suit:

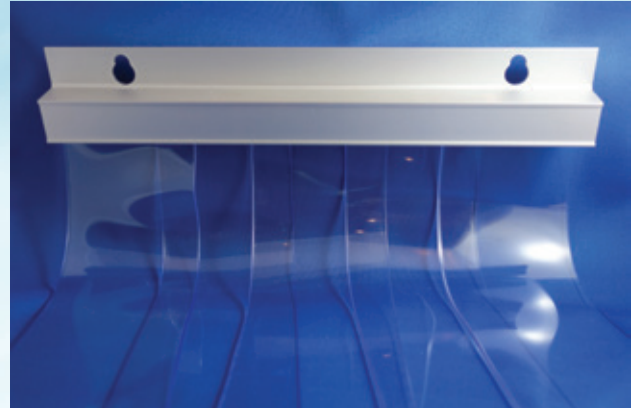
- Industrial P.V.C. Doors
- Heavy Duty Traffic Doors
- Shop Fronts
- Door ways for refrigerated trucks
- Weather & impact protection
- Cold Rooms
- Clean Rooms
- Residential Doors
- Flexible partitions



"SEE-THRU" STRIP DOOR HEAD SECTIONS



HOOK ON HOOK OFF PLATES



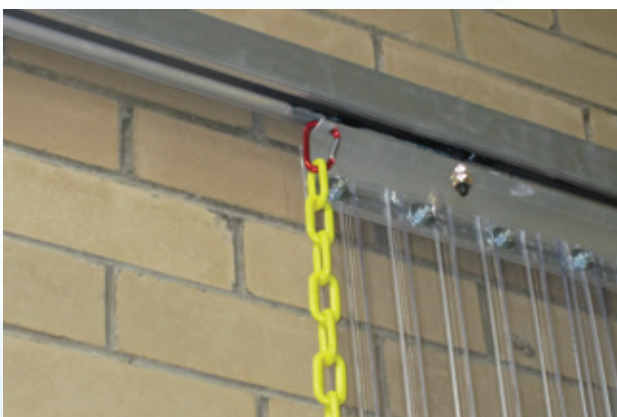
NEW HEAD SECTION



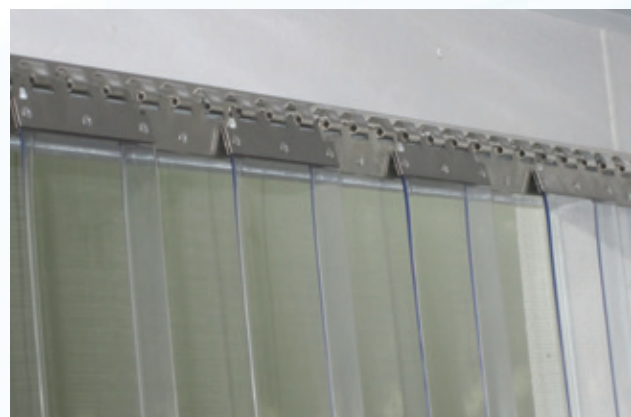
MTI ANGLE



UNDER LINTEL



SLIDING HEAD SECTION



HOOK ON / HOOK OFF HEAD SECTION



For further information please contact:

M.T.I. Qualos Pty. Ltd.
55 Northern Road, West Heidelberg, Vic. 3081.
Telephone: +61 (0)3 9450 1900 Fax: +61 (0)3 9450 1947

Free call: 1300 135 539
Email: sales@mtiqualos.com.au
Website: www.mtiqualos.com.au