



# S1100 ROLL-FAST DOOR

QUICK AND EASY ACCESS, RELIABILITY AND PERFORMANCE



# S1100 ROLL-FAST DOOR

QUICK AND EASY ACCESS, RELIABILITY AND PERFORMANCE



## Maximum Door Size

4250mm High x 4000mm Wide

The S1100 Roll-Fast Door is designed to suit a large variety of door applications. If speed, safety and reliability are features you require, the S1100 Roll-Fast Door will suit you with an opening speed of up to 1300mm per second.

Constructed from minimal moving parts also reduces any maintenance work. Complete with a special tensioning spring mechanism, this ensures the door curtain is kept taut at all times providing a complete weather seal. Suitable for both internal/external applications.



## Door specifications

## S1100 Technical drawing

**APPLICATION:** External / Internal.

### DOOR SIZE:

The S1100 Roll-Fast Doors are produced for internal and external openings up to 4250mm High x 4000mm Wide.

### DOOR PANEL:

All doors are fitted with a durable vinyl panel with a clear PVC. centre section approximately 900mm – 1200mm high x the full width of the door opening.

### DOOR SPEED:

The standard operational speed of the S1100 Roll-Fast Door is between 1100mm and 1300mm per second with a Speed Variator.

### SAFETY FEATURES:

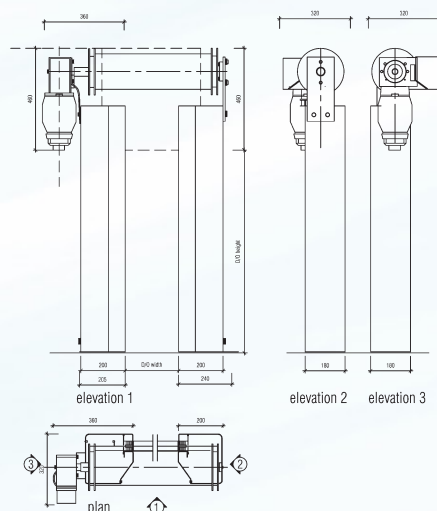
A Photo Electric Cell is installed within the door posts to prevent the door closing, should the Photo Electric Cell be obstructed.

### ACTIVE REVERSING EDGE:

Within the bottom rail a self guarding safety edge system is fitted. This system, when triggered will return the door to the open position and "lock" the door in the open position until reset.

### CONTROL PANEL:

A Digital Display is supplied to all S1100 Roll-Fast Door control panels. Should a fault occur, it will detail what the fault is and our comprehensive manual will help you with a solution to the problem.



### POWER SUPPLY:

A 10 ampere, single phase, neutral and earth power supply complete with isolating switch.

### DOOR FINISH:

Standard galvanised or optional powder coated to door posts.

## Standard Features

### Reverse Edge

### Photo Electric Cell

## Control Options

- Inductive Loops
- Push Buttons
- Remote Control
- Interlock Facility
- Microwave Sensors
- Infra Red Sensors



## Panel Colours

- Yellow
- Blue
- Red
- Orange



## Optional ventilation