

S800 ROLL-FAST DOOR

4MM THICK CLEAR P.V.C. DOOR WITH ROBUST VERTICAL OPENING



S800 ROLL-FAST DOOR

4MM THICK CLEAR P.V.C. DOOR WITH ROBUST VERTICAL OPENING



Maximum Door Size

5500mm High x 5850mm Wide

A heavy duty robust door with 4mm thick fully transparent curtain ensures safe transport routes and good visual contact.

Generally used for external applications, this versatile S800 Roll-Fast Door is ideal for use in manufacturing and the food industry.

The opening speed of 0.8 m/s is designed for doors up to 5500mm High x 5850mm Wide in normal operation. The tried-and-tested inversion relay control system is entirely sufficient to ensure safe door operation.

Fold-out side frames facilitate maintenance procedures. The operator and shaft are borne by the cantilever side frames housing the photocell, energy chain and the side tensioning and pull mechanism. Brush seals reduce drafts.

Where the S800 Roll-Fast Door is exposed to high wind pressures, we recommend using additional aluminium wind safety profiles to give the curtain the necessary rigidity. By using the wind safety profile, a vinyl panel or fully transparent curtain can also be combined.

Door specifications

S800 Technical drawing

APPLICATION: External.

DOOR SIZE:

Up to 5500mm High x 5850mm Wide maximum.

DOOR PANEL:

Made from heavy duty 4mm thick clear P.V.C. that offers 100% vision. As an option a 1.6mm thick vinyl panel with clear centre section can also be supplied.

WIND LOAD:

The S800 Roll-Fast Door is capable of withstanding wind loads up to 74kph. Lateral belts, tension springs and pulley systems keep the P.V.C. curtain taut during all operations.

As an option, it can be supplied with wind extensions that can increase wind load to 95 kph.

DOOR SPEED:

The standard operational speed of the S800 Roll-Fast Door is 800mm/sec.

SAFETY FEATURES:

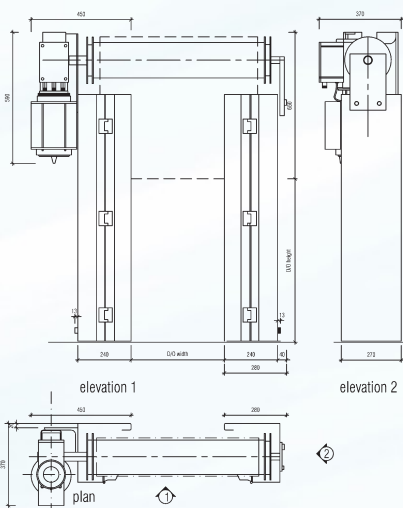
A Photo Electric Cell is installed within the door posts to prevent the door closing, should the Photo Electric Cell be obstructed.

ACTIVE REVERSING EDGE:

Within the bottom rail a self guarding safety edge system is fitted. This system, when triggered will return the door to the open position and "lock" the door in the open position until reset.

CONTROL SYSTEM:

This system is micro processor based with a speed variator which is specifically designed



for the operation of the automatic door, with the flexibility to meet the changing needs of our customers.

POWER SUPPLY:

A 10 ampere, three phase, neutral and earth power supply complete with isolating switch.

DOOR FINISH:

Standard galvanised or optional powder coated to door posts.

Standard Features

Reverse Edge Photo Electric Cell

Control Options

- Inductive Loops
- Microwave Sensors
- Push Buttons
- Infrared Sensors
- Remote Control
- Interlock Facility



Panel Colours

- Yellow
- Blue
- Black
- Red